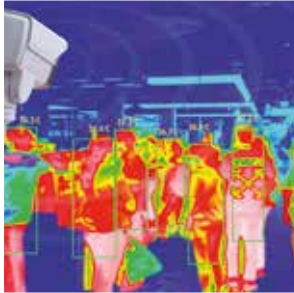




NETWORK HAPPY



WIRELESS & WIRED NETWORK SOLUTIONS
DATA CABLING & CONNECTIVITY • CCTV • AV

"I have known Stuart for a very long time now and worked with him on projects with D Link, Netgear and his new venture Formula Networks, the IT solutions company. Apart from his exceptional knowledge of his market – Stuart is a genuine guy who is honest and will always go that extra mile to ensure he provides the best possible assistance to any customer, ensuring that they get the very best possible IT solution to meet their needs and budget."

PETER TOWNSEND
EDUCATION AV CONSULTANT
WWW.GVMULTIMEDIA.COM

WE'RE A TEAM OF EXPERIENCED IT SPECIALISTS

We provide

Formula Networks is the creator of unique IT environments that make people network happy.

Founded by Stuart Miles in 2010 and for over 18 years, Stuart has implemented data networking and telecoms for some of the biggest global IT companies. Harnessing his experience and the power of distributed teams, Formula Networks deliver IT excellence at scale locally and all over the UK. Our access to unique skill sets and best technology philosophy means we can remain vendor agnostic and deliver your project with exceptional value.

We implement transformative technologies that can influence organisational efficiencies that can unlock new levels of potential for you, and in a short space of time.

We work with clients across commercial, charity and government sectors on projects that transform their work places and prospects. These clients trust us to deliver technology that empowers them to succeed – helping them to become network happy.

CREATE UNIQUE ENVIRONMENTS

Formula Networks provide solutions to many sectors such as: Education, Leisure, Hospitality, Warehousing & Logistics, Retail, Social Care, Health, Transport and many others.

INSTALLING BEST TECHNOLOGY

Our DBS checked engineers are certified in many renowned brands such as: Cisco, Meraki, Ruckus, HP Aruba, Ubiquiti, Draytek and many others.

WIRELESS & WIRED NETWORK SOLUTIONS

When you need to maximise your data transfer in your business, whether fixed or remote, we have the expertise to help your efficiencies.

REVIEW, DESIGN, AND DEPLOY

We design and deploy network solutions to suit the particular needs of each client. From fully integrated multi-site wireless solutions to complete wired network solutions with remote access as required. In each case, we prioritise vendor leaders such as Cisco, Meraki, Ruckus, HP Aruba, Draytek, Ubiquiti and NETGEAR, ensuring best solutions for your needs throughout.



EVERY BUSINESS IS A TECHNOLOGY BUSINESS.

WIRELESS **OR** WIRED

Formula provide Wireless and Wired audits to help review your current network and possible issues. These vary from simple consultations to testing and full reporting. Each solution has it's merits for each situation, here's some service pointers for you to consider.



- **802.11 standard Wireless solutions** – Survey, hardware supply and installation.
- **Professional heat mapping and site survey** – Providing remote desktop heat mapping or full on-site RF pre-install survey and post install RF survey services.
- **Indoor Wireless** – Providing Wireless across full sites to support smaller or larger numbers of devices (up to 1000's of users).
- **Outdoor device access for various scenarios** – Holiday Parks, Playgrounds, Sports Stadiums and many others.
- **Point to Point last mile service** – To provide Wireless links for building to building or multiple buildings back to one (IP rated solutions).
- **Wireless for various applications** - Internet browsing, bar code scanning, VoIP, guest access, monitoring and many others.
- **Certified with vendors** - Cisco, Meraki, Ruckus, HP Aruba, Draytek, Ubiquiti, TP-Link and others.

Using professional tools such as Ekahau Survey, we can provide your independent Wi-Fi survey to help you find weakness in your Wireless network or to help find the correct solution and locations for future Wi-Fi solutions being considered.



- **Structured cabling** – Best of breed cabling, Excel and many others. Copper ethernet twisted pair with vendor warranties.
- **External or internal grade cabling** - Support various speeds up to 40gb.
- **Trunking and Dado** - For tidy offices and cable management.
- **Data cabinet** - Installation and tidying services with patch panel and PDU functions.
- **Fibre networking** – Terminating, splicing, offering back bone cable solutions for building or cab to cab links.
- **Data Switches and PoE (Power Over Ethernet)** - To support data, VoIP, Wi-Fi and CCTV solutions.
- **Certified with vendors** - Cisco, Meraki, Ruckus, HP Aruba, Draytek, NETGEAR, Ubiquiti, TP-Link and others.
- **Cabling and fibre testing and auditing services.**

Formula provide Wired networking audits. This enables our clients to make the best decisions for their IT requirements, both now and in the future. Does the current Wired network support the demands of the applications and provide efficiency?

DATA CABLING & CONNECTIVITY SOLUTIONS

Connectivity can be a combination of wired or wireless with most approaches being wireless links for connecting and sharing IT and internet resources.

PRACTICAL TECHNOLOGY CONNECTIONS

We offer an extensive range of solutions and services for your cabling and connectivity requirements. No matter what you wish to connect (pc's / servers / buildings / cabinets / CCTV cameras / machines / phones), we have a solution to make you network happy.

Formula can provide simple assessments or fully detailed cabling audits to ensure you have the most information prior to your solution implementation. With an experienced set of cabling teams around the UK, we provide the right skills and provide the right solution for your business requirement. Our certified teams of installers can provide copper structured cabling (CAT6) and multi-core fibre connections to ensure you're connected across your estate and beyond.

Our DBS checked cabling teams have accredited working at heights certifications for tricky point to point or multi-point Wireless bridges or in industrial warehouse and height conditions. We can provide the hire of MEWP / height machinery if required

and always offer a complete survey and risk assessment before carrying out installations.

Formula provide best of breed cable and connectivity solutions including:

- CAT6 structured ethernet solutions.
- Trunking, dado and other containment options.
- External grade ethernet solutions.
- Multi and single mode fibre solutions to provide fastest backbones, up to 100gb!
- PDU, panels and data cabinets including IP rated solutions for the harshest of British outdoor weather.
- In depth independent cabling and network audits including fibre and cabling testing options.

"Stuart of Formula Networks previously led the wireless site survey service for NETGEAR resulting in many excellent case studies and repeat business."

JONATHAN HALLATT
VP OF COMMERCIAL SALES | AMERICAS (NETGEAR)

BEST TECHNOLOGY AVAILABLE

We provide best of breed cable and connectivity solutions such as multi and single mode fibre solutions that provide fastest backbones, up to a staggering 100gb.



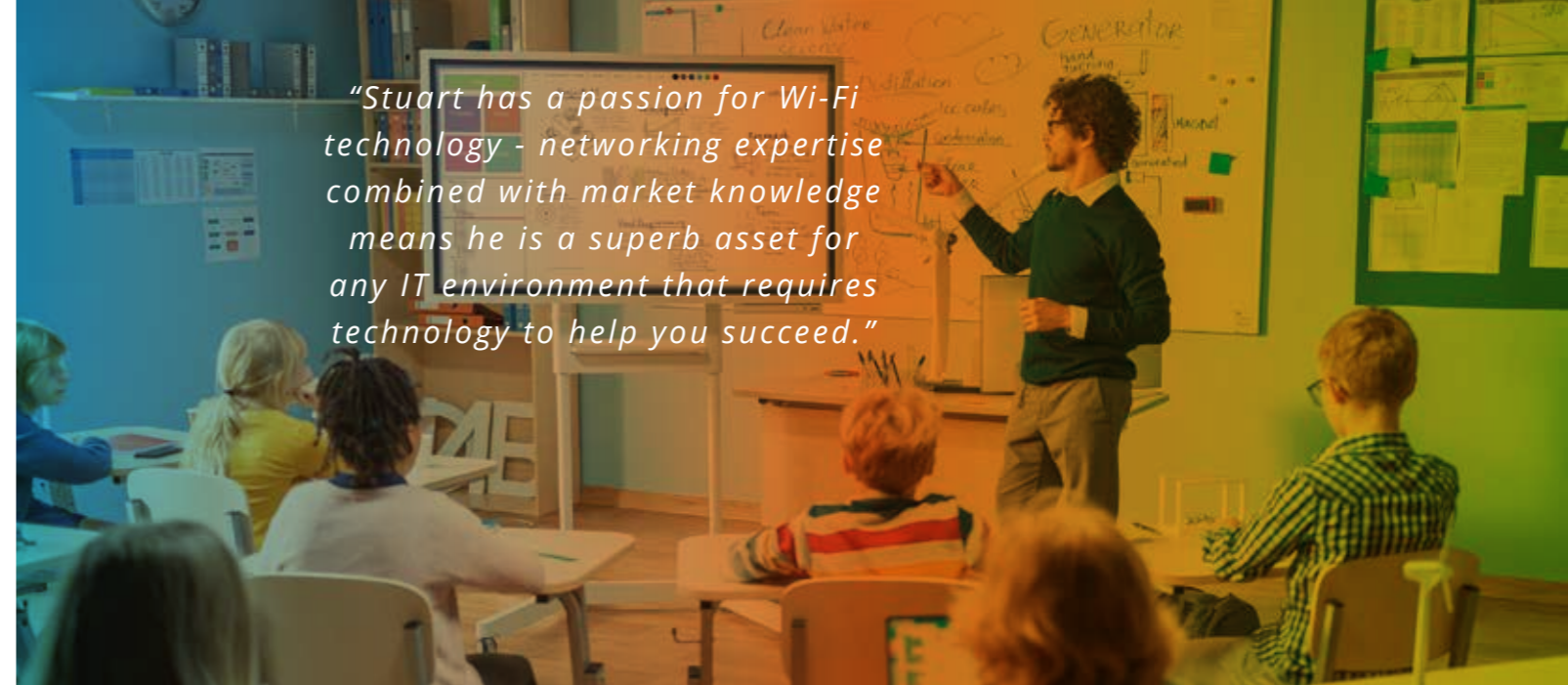
CCTV SOLUTIONS

Keep your business and people safe with a state of the art crystal clear CCTV over IP solution suitable for your environment.

DESIGN, SUPPLY AND INSTALL

We design, supply and install CCTV over IP solutions that suit most budgets and environments, all backed by a manufacturer warranty for peace of mind.

- **Temperature screening** – Providing automated or self-scan temperature verification using thermal imaging camera solutions. Often integrated into door entry or even airport style detector scanning solutions.
- **Day and night auto IP CCTV** – For in or outdoor environments or mixed. Auto lenses and low light exposure controls ensure fantastic monitoring and alerting solutions.
- **Intelligence** – Facial recognition, number plate scanning, 24/7 recording, cloud control with complete automation.
- **Multiple control and recording** – Including alerts and messages with pan, tilt and zoom options.



"Stuart has a passion for Wi-Fi technology - networking expertise combined with market knowledge means he is a superb asset for any IT environment that requires technology to help you succeed."

AUDIO VISUAL

When you need advice and expertise for the classroom or the board room where interactive high quality video and audio are a necessity.

LEARNING, TEACHING AND PRESENTING

We supply, install and train staff members using our best of breed AV solutions or we can install your purchased AV solution ensuring the right fixings and materials are used.

- **Interactive Touch Screen Displays** – From 32" to 100"+ Ideal for classroom or lecture rooms, wall or floor mounted
- **Short Throw Projection** – Ideal for clients who require less features and perhaps working on lower budgets.
- **Mobile AV solutions** – Screens on stands for making the most of limited budgets and offering maximum flexibility.
- **Digital Signage** – Such as interactive meeting room digital booking systems.
- **Sound** – From sound bars to full multiple speaker solutions.
- **Visitor sign in and touch screen** – Electronic reception registration solutions.
- **Video wall** – Multiple screen or large display, often used in retail.
- **Cabling** – Including AV over CAT6, plus trunking and dado AV cable kit options.
- **Demo and training options** – Maximise your investment and get the most out of your technology.

NATIONAL BUSINESS LOCAL INTEREST

We're proud of our Shropshire heritage and love of the region and we're very pleased to be able to bring the world of data networking to our friends, colleagues and partners in the county and UK wide.

SERVICE AND SUPPORT TO SUIT YOU

Nationwide support yet with a local focus, we work UK wide in many industries providing expert advice and installing the very best solution. We're focussed on forming great relationships with local and national partners and clients to ensure we offer a value for money and piece of mind flexible service, helping you become Network Happy!

- **Education** – Schools, private education, colleges and universities.
- **SMB's** – Multiple types of small business
- **Home workers / remote small offices** – extend networks in the professional home or for the remote worker.
- **Health and social care.**
- **Places of worship and community spaces.**
- **Leisure and hospitality** – from outdoor parks, holiday and leisure parks, to hotels and arenas!
- **Residential** - Retirement homes and student accommodation sites.
- **Industry and manufacturing** - From small to large multi-national organisations.
- **Government and Military** – Some of the team have highest levels of SC clearance that enables us to provide solutions to the forces and in some cases as contractors for Government.

CREATING UNIQUE PARTNERSHIPS

We've worked hard to develop close ties with key manufacturers, trade distributors and resellers. Along with trusted complimentary services for other vendors, such as PC servers, software and internet services and filtering.

"We have used Formula Networks for the last four years. They have installed a full Wi-Fi system in our Inn with resulting in us having very little Wi-Fi down time. I would highly recommend Formula Networks, the IT solutions company, for all aspects of your IT support."

**NICK ILLINGWORTH
DIRECTOR BLUE BALL INN**



**WIRELESS & WIRED NETWORK SOLUTIONS
DATA CABLING & CONNECTIVITY • CCTV • AV**

TELEPHONE: **01952 897147** // MOBILE: 07866 232521
hello@formulanetworks.co.uk // **formulanetworks.co.uk**

Hinstock Shropshire TF9 2SL

BE

**NETWORK
HAPPY**

